

ENGINEERING
GRAPHICS
AND DESIGN

GRADE 12

PAPER 2

NOVEMBER

2008

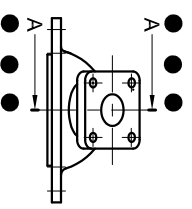
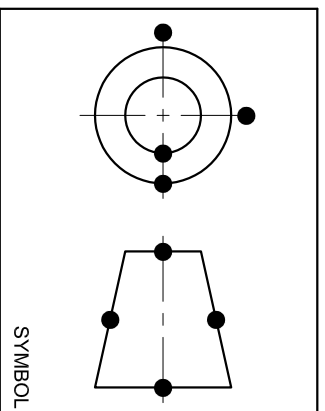
MEMORANDUM

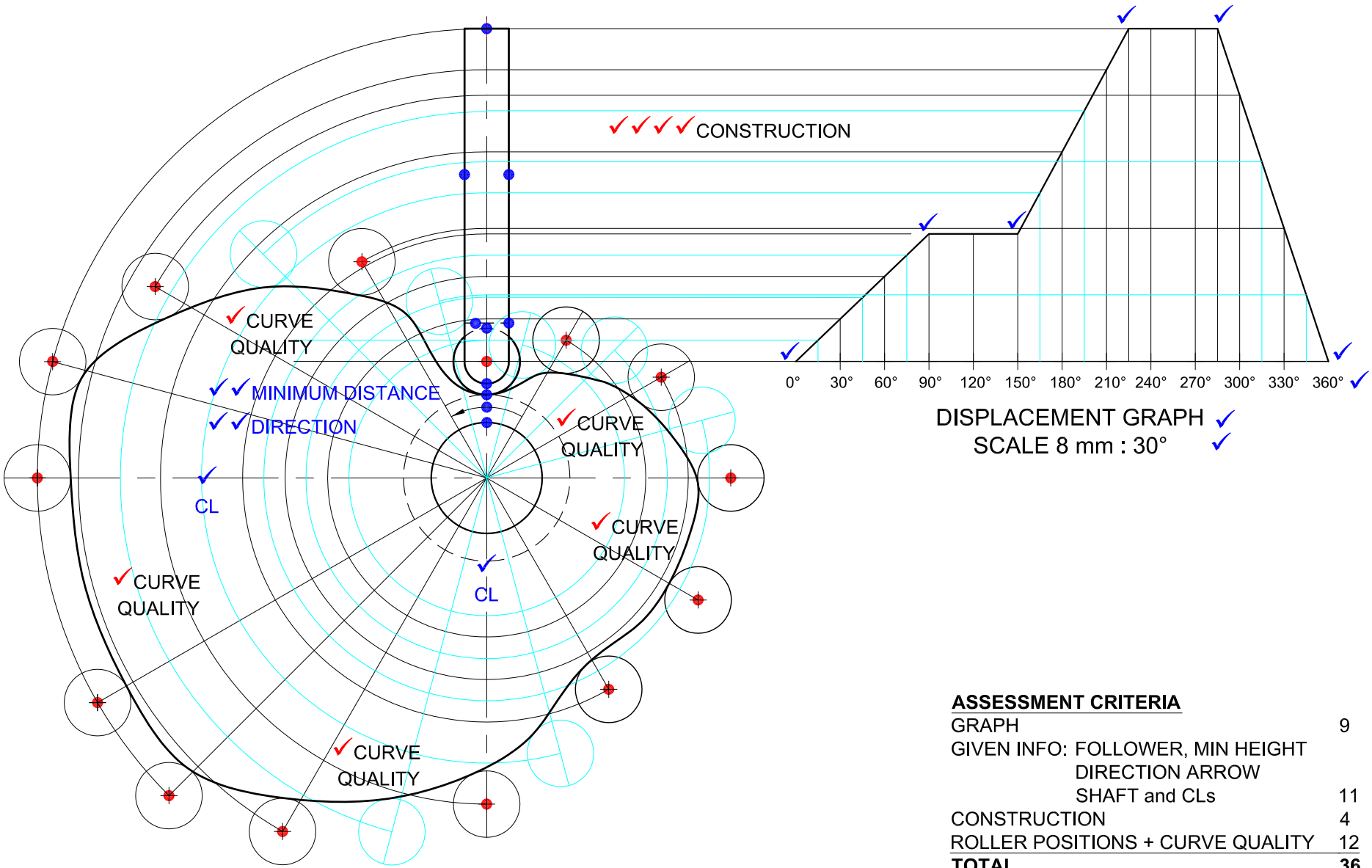


ANSWERS

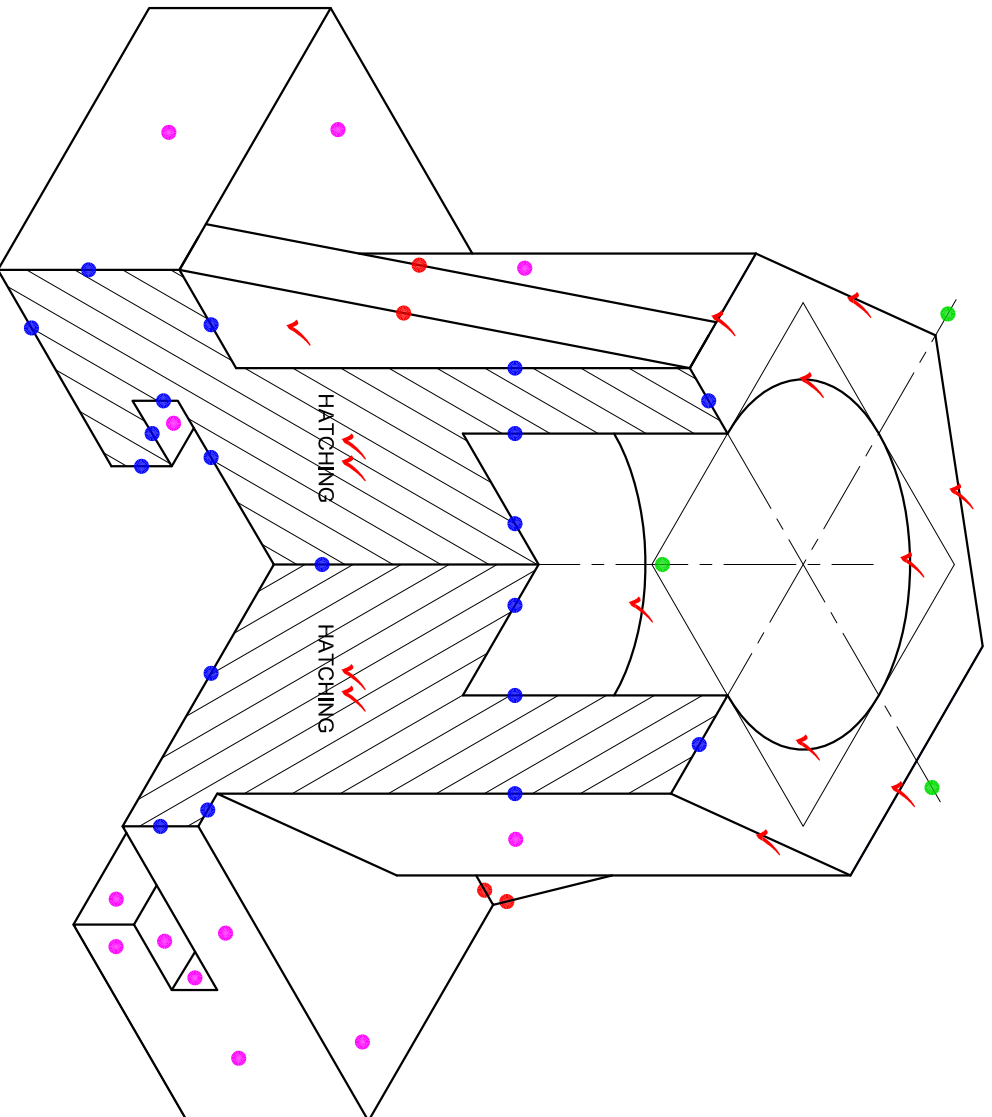
1	2-10-08	1/2
2	EAST LONDON	1/2
3	N-P2-E018	1/2
4	2	1/2
5	±0,05	1/2
6	8	1/2
7	6	1
8	SCREW THREAD	1
9	CHAMFER	1
10	KNURLING	1
11	SPRING	1
12	6	1
13	AUXILIARY VIEW	1
14	1. FULL SECTION 4. HALF SECTION	2
15	Ø42, Ø213/213PCD, 12, M33	4
16	90°	1
17	● A ——— ● X2	3
18	MACHINED TO A ROUGHNESS VALUE OF 0,02	1
19	3RD ANGLE	1
20		4

TOTAL 26





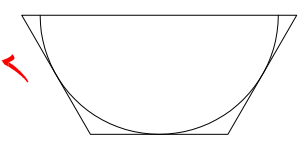
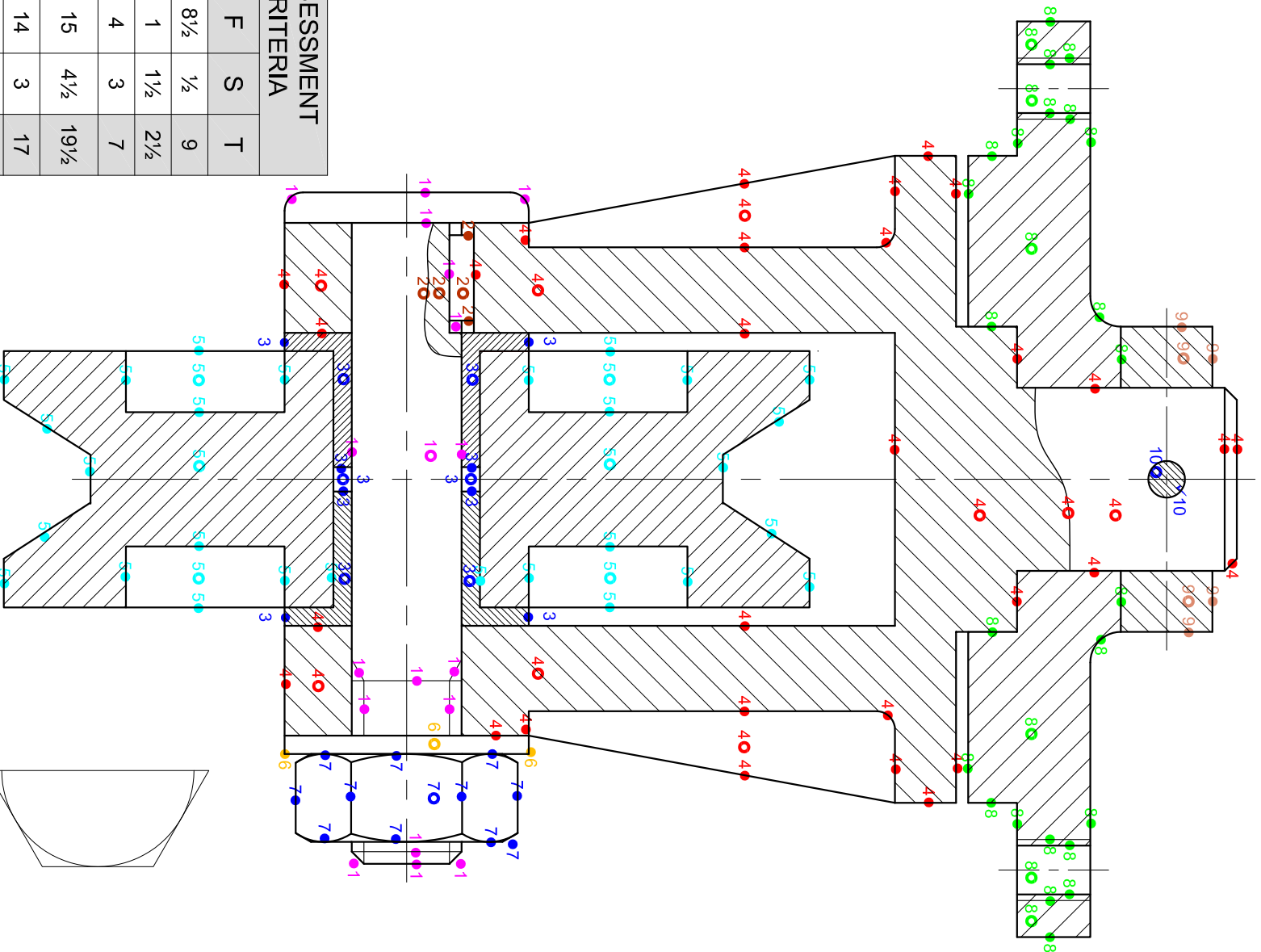
ASSESSMENT CRITERIA	
GRAPH	9
GIVEN INFO: FOLLOWER, MIN HEIGHT	
DIRECTION ARROW	
SHAFT and CLs	11
CONSTRUCTION	4
ROLLER POSITIONS + CURVE QUALITY	12
TOTAL	36



A ↘

ASSESSMENT CRITERIA

AUXILIARY VIEW	= 2
ISOMETRIC SURFACES	= 6
NON-ISOMETRIC LINES	= 2
SECTIONED SURFACE	= 9½
ISOMETRIC CIRCLES	= 4
CIRCLE CONSTRUCTION	= 3
HATCHING	= 5
CENTRE LINES	= 1½
HEXAGON	= 5
PLACING ON A	= 2
TOTAL	= 40



CONSTRUCTION

ASSESSMENT CRITERIA

	F	S	T
1. SHAFT	8½	½	9
2. KEY	1	1½	2½
3. BUSH	4	3	7
4. HANGER BRACKET	15	4½	19½
5. PULLEY	14	3	17
6. WASHER	1	½	1½
7. M18 NUT	6½	½	7
8. MOUNTING PLATE	12	3	15
9. COLLAR	2	1	3
10. PIN	1	½	1½
CENTRE LINES			5
ASSEMBLY			10
TOTAL	98		

QUESTION 4 PAPER 2
 GRADE 12 NOVEMBER 2008
 MEMORANDUM