



basic education

Department:
Basic Education
REPUBLIC OF SOUTH AFRICA

**NATIONAL
SENIOR CERTIFICATE**

GRADE 12

ENGINEERING GRAPHICS AND DESIGN P1

FEBRUARY/MARCH 2011

MEMORANDUM

MARKS: 100

This memorandum consists of 5 pages.

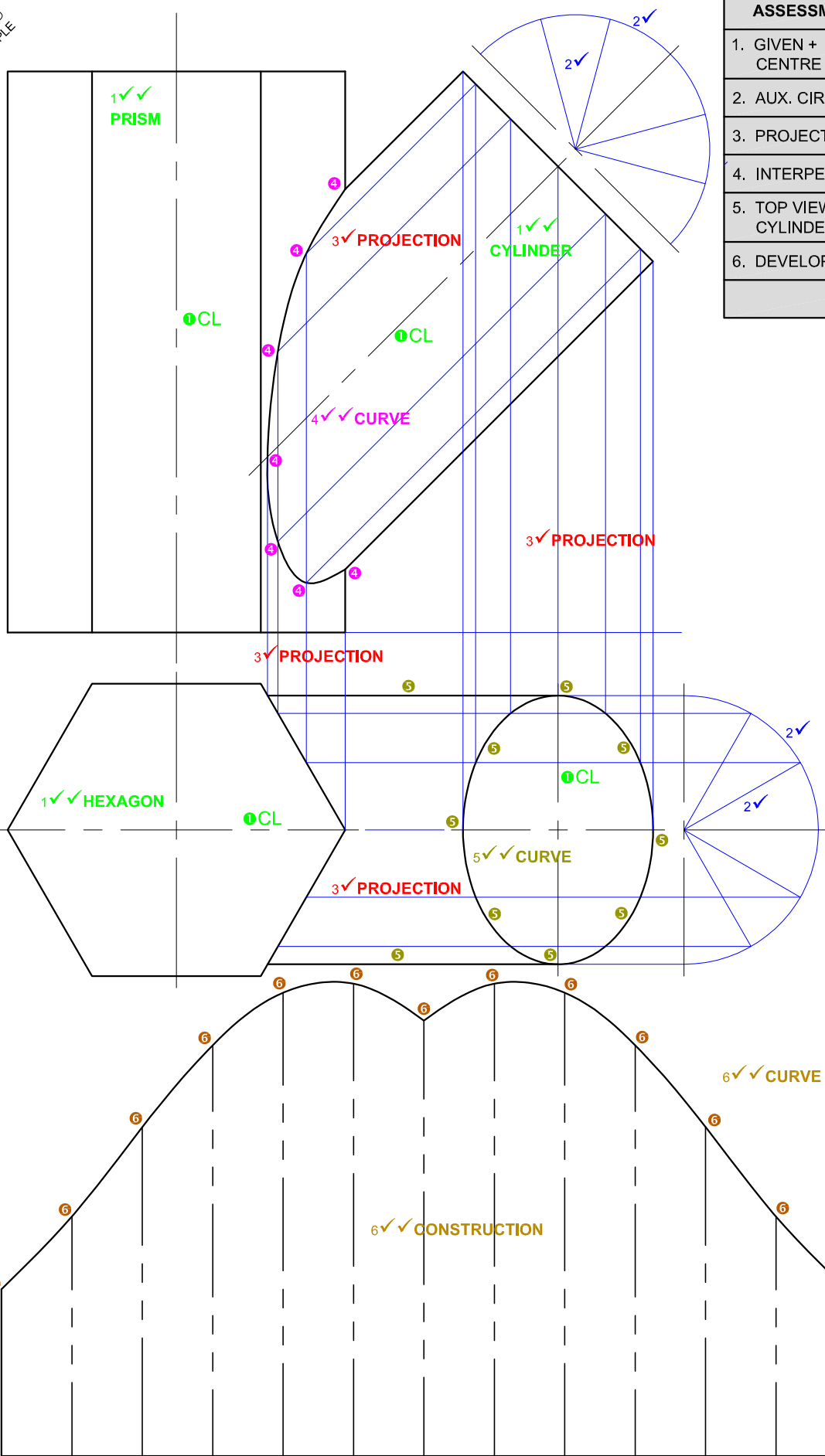


ANSWERS

| | | |
|----|---|----------------|
| 1 | THE OUTBUILDING IS OUTSIDE THE BUILDING LINE OR THE <u>OUTBUILDING ROOF IS OVER THE BOUNDARY LINE.</u> | 2 |
| 2 | 79 | 1 |
| 3 | 1 | 1 |
| 4 | SCALE 1 : 200 | 1 |
| 5 | 12-04-2010 | 1 |
| 6 | KAYSERS BEACH | 1 |
| 7 | MARLIN DRIVE | 1 |
| 8 | 2 | 1 |
| 9 | 14 | 1 |
| 10 | INSPECTION EYE | 1 |
| 11 | MANHOLE | 1 |
| 12 | BUILDING LINE | 1 |
| 13 | MUNICIPAL SEWER LINE | 1 |
| 14 | CONTOUR LINE | 1 |
| 15 | ROOF OVERHANG | 1 |
| 16 | BOUNDARY LINE | 1 |
| 17 | ISLAND IN THE ROAD | 1 |
| 18 | 0.5 m | 1 |
| 19 | SOUTH | 1 |
| 20 | $37.806 + 24.200 + 10.615 + 30.300 + 31.706 \text{ ①} = 134.627 \checkmark \text{m} \checkmark$ | $2\frac{1}{2}$ |
| 21 | $37.806 \times 31.706 = 1198.67704 \text{ ①}$ $37.806 - 30.3 = 7.506 \text{ ①}$ $7.506 \times 7.506 = 56.340036 \text{ ①}$ $56.340036 / 2 = 28.170018 \text{ ①}$ $1198.67704 - 28.170018 \text{ ①} = 1170.5 \checkmark \text{m}^2 \checkmark$ | $4\frac{1}{2}$ |

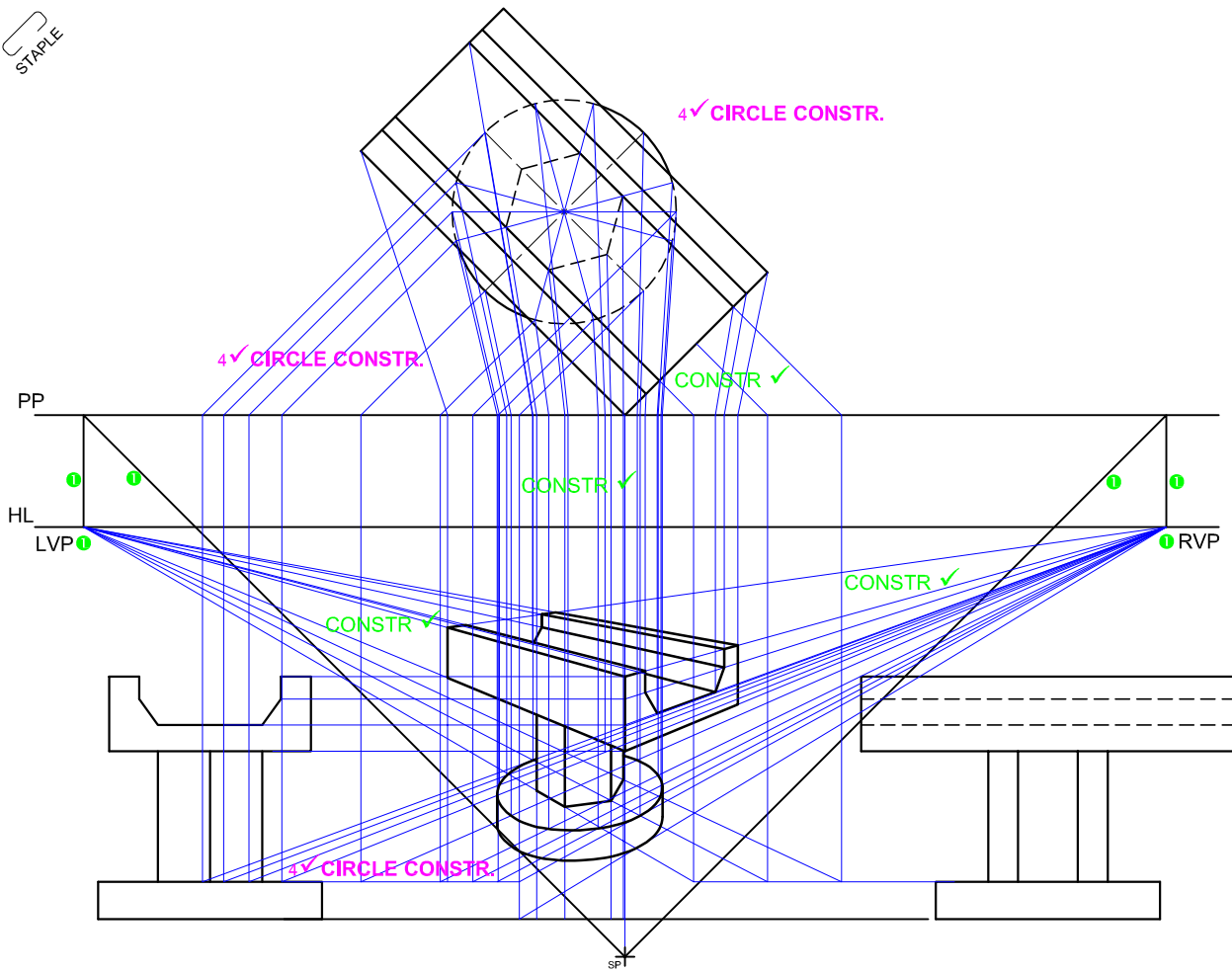
TOTAL: 27

STAPLE

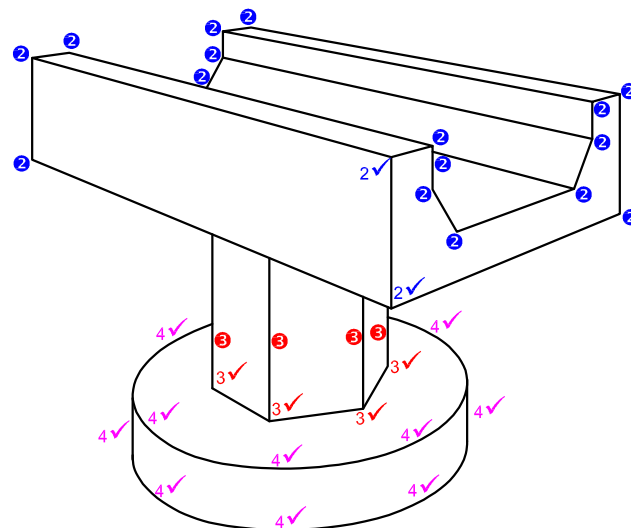


| ASSESSMENT CRITERIA | |
|-------------------------|-----------|
| 1. GIVEN + CENTRE LINES | 8 |
| 2. AUX. CIRCLES | 4 |
| 3. PROJECTION | 4 |
| 4. INTERPENETRATION | 5½ |
| 5. TOP VIEW OF CYLINDER | 7 |
| 6. DEVELOPMENT | 11½ |
| TOTAL | 40 |

PAPER 1 QUESTION 2
 GRADE 12
 FEBRUARY/MARCH 2011
 MEMORANDUM



HL _____



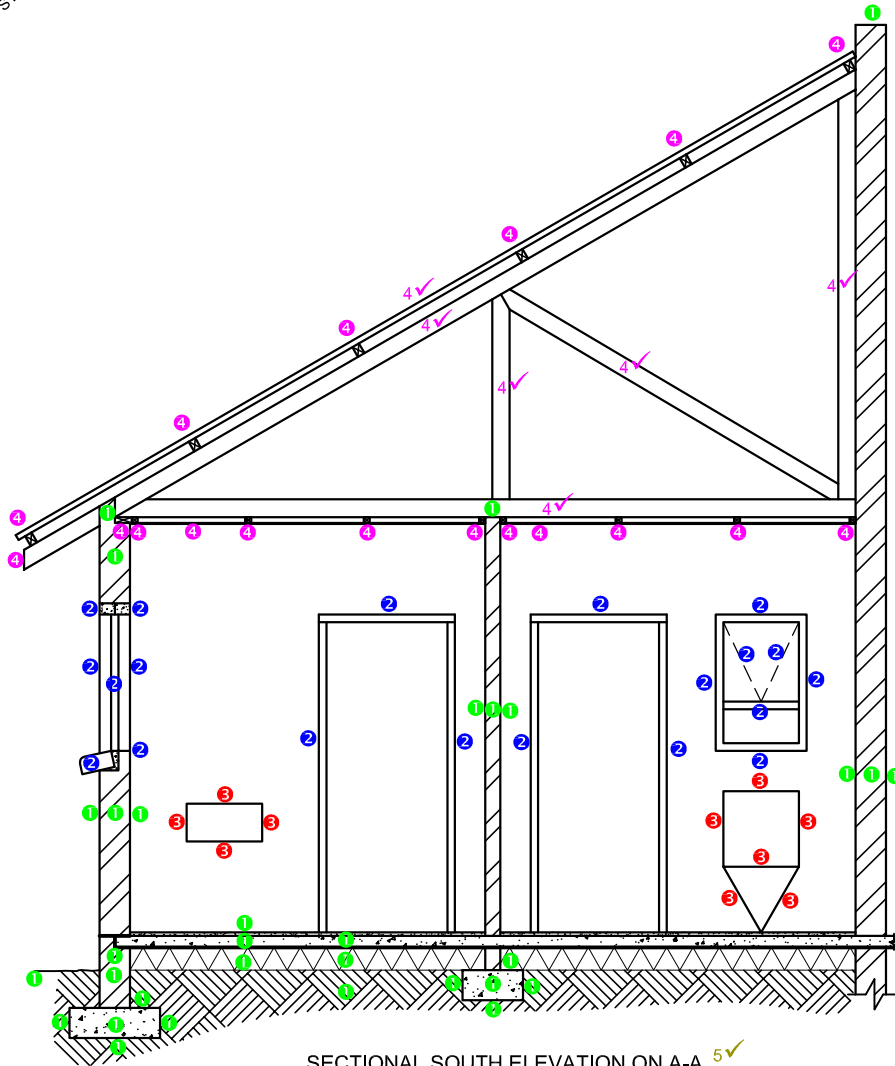
GL _____



| ASSESSMENT CRITERIA | |
|-----------------------|-----------|
| 1. CONSTRUCTION + VPs | 7 |
| 2. ROAD | 10 |
| 3. HEXAGONAL PILLAR | 6 |
| 4. ROUND BASE | 13 |
| TOTAL | 36 |

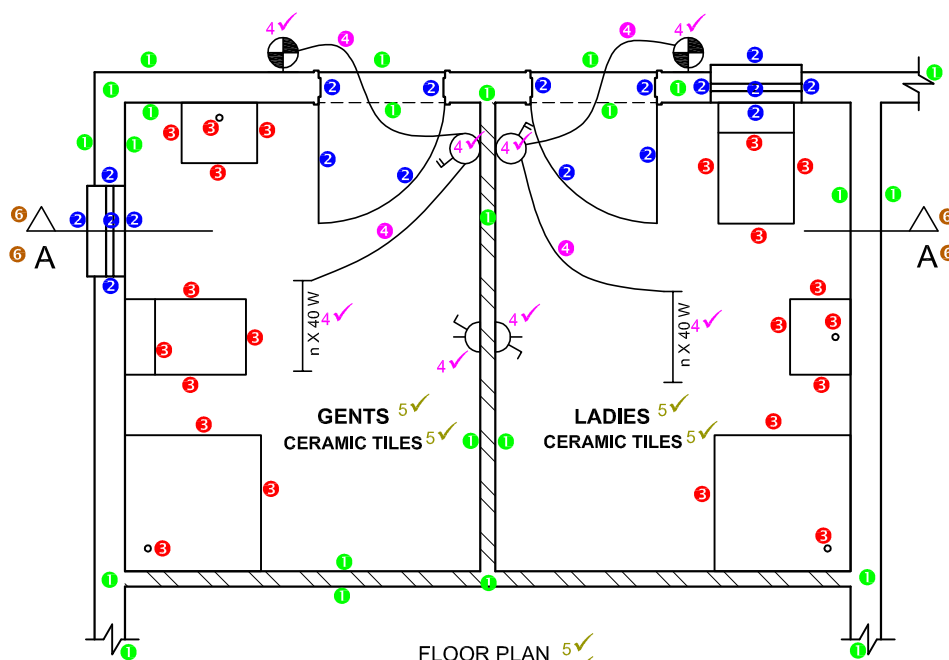
PAPER 1 QUESTION 3
 GRADE 12
 FEBRUARY/MARCH 2011
 MEMORANDUM

STAPLE



SECTIONAL SOUTH ELEVATION ON A-A 5✓

| SECTIONAL SOUTH ELEVATION | |
|---------------------------|-----------|
| 1. WALLS + HATCHING | 16 |
| 2. WINDOWS + DOORS | 10 |
| 3. FIXTURES | 5 |
| 4. ROOF + CEILING | 15 |
| 5. LABELS | 1 |
| SUBTOTAL | 47 |



FLOOR PLAN SCALE 1 : 50 5✓

| PLAN | |
|----------------------|-----------|
| 1. WALLS + HATCHING | 12 |
| 2. WINDOWS + DOORS | 9 |
| 3. FIXTURES | 11 |
| 4. ELECTRIC | 10 |
| 5. LABELS | 6 |
| 6. CUTTING PLANE A-A | 2 |
| SUBTOTAL | 50 |
| TOTAL | 97 |

PAPER 1 QUESTION 4
 GRADE 12
 FEBRUARY/MARCH 2011
 MEMORANDUM