



# education

---

Department:  
Education  
**REPUBLIC OF SOUTH AFRICA**

**NATIONAL  
SENIOR CERTIFICATE**

**GRADE 12**

**ENGINEERING GRAPHICS AND DESIGN P1**

**FEBRUARY/MARCH 2010**

**MEMORANDUM**

**MARKS: 200**

**This memorandum consists of 5 pages.**

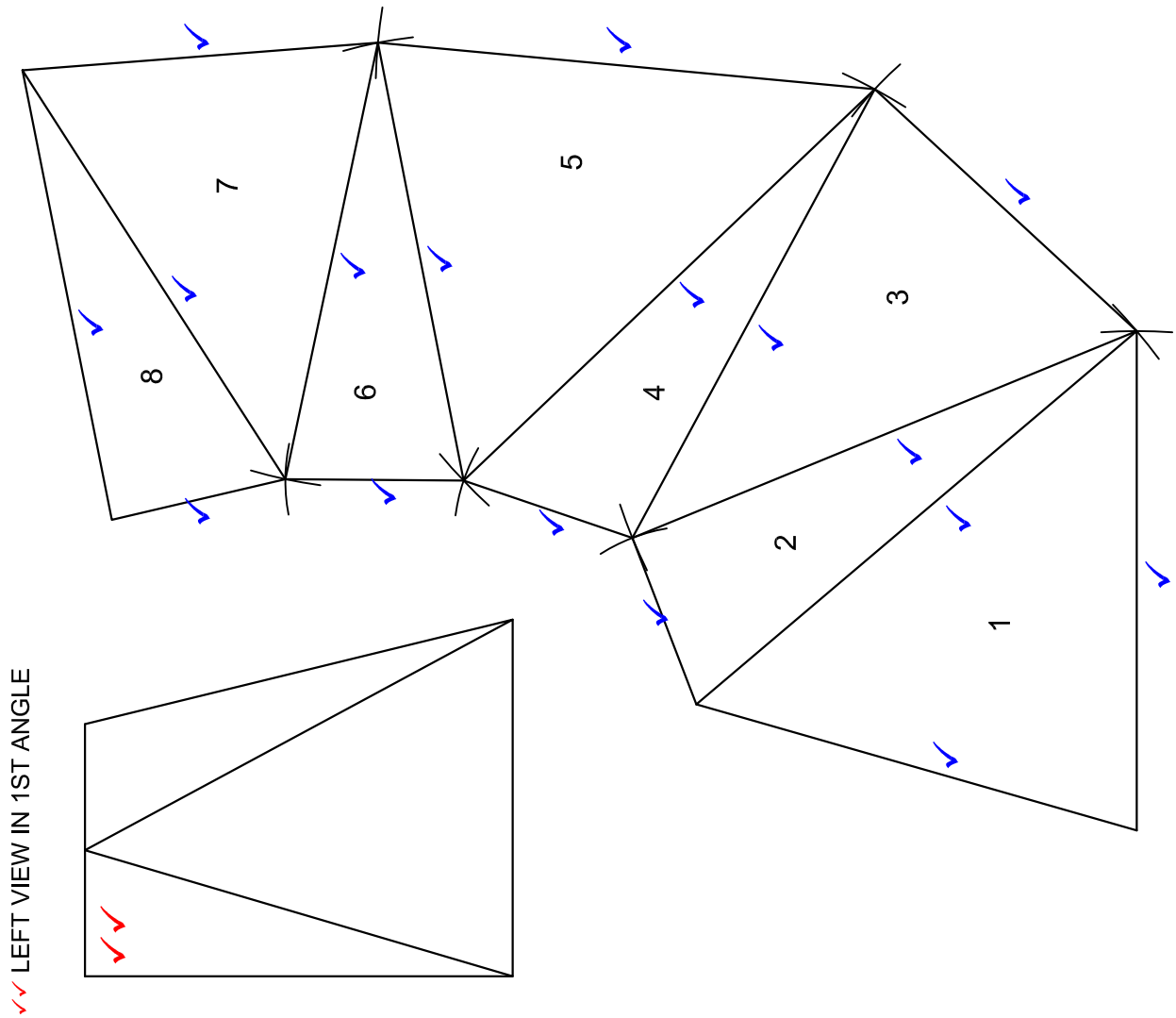
ANSWERS		
1	GOVENDER & SONS	1
2	1:200	1
3	Q1P1-S-2010	1
4	CRAIG	1
5	0	1
6	ADJACENT BUILDING	1
7	CONTOUR	1
8	GATE SWING	1
9	BUILDING LINE	1
10	MUST BE DEMOLISHED	1
11	24 VALLEY VIEW ROAD	1
12	73	2
13	4500	2
14	1,7 m	2
15	GREEN	2
16	RED	1
17	368,29 m <sup>2</sup>	3
18	33,9%	3
19		4

TOTAL: 30

19

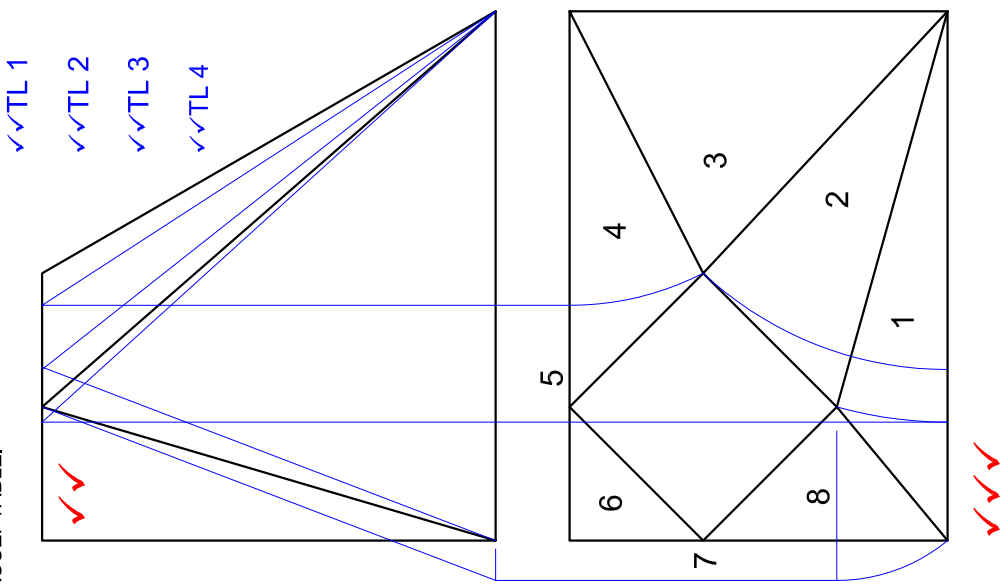
FREEHAND

PAPER 1 QUESTION 1  
 GRADE 12  
 FEBRUARY/MARCH 2010  
 MEMORANDUM



✓✓ LEFT VIEW IN 1ST ANGLE

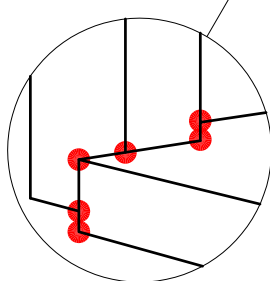
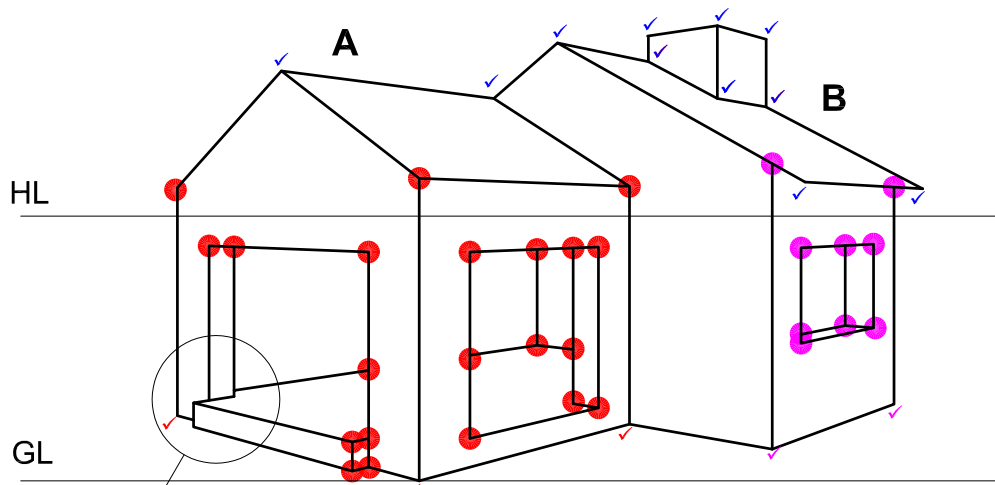
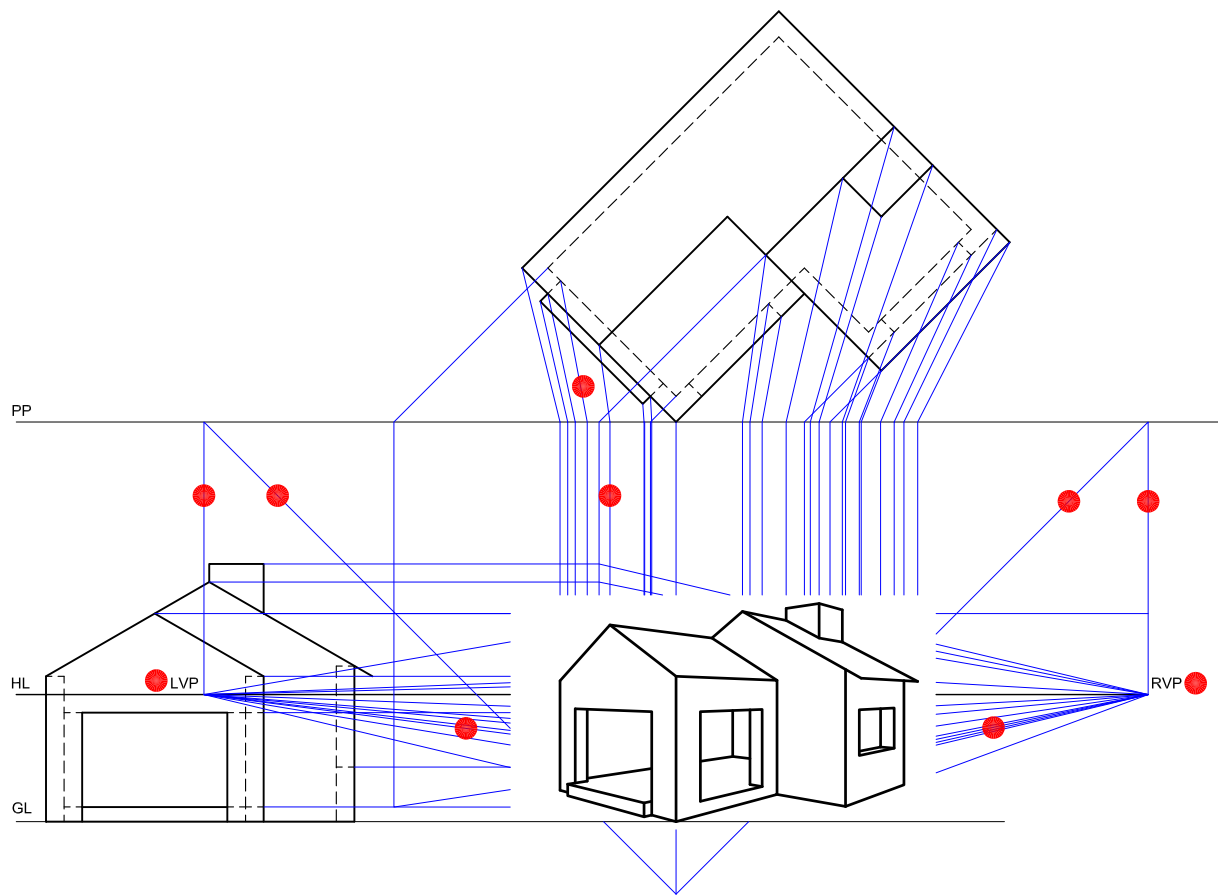
ANY RECOGNISED METHOD OF DETERMINING THE TRUE LENGTH OF THE LINES WILL BE ACCEPTABLE.



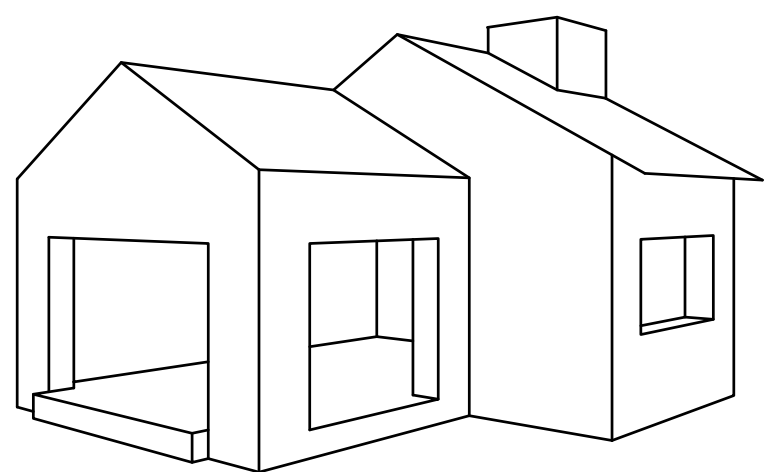
✓✓TL 1  
✓✓TL 2  
✓✓TL 3  
✓✓TL 4

ASSESSMENT CRITERIA	
TOP + FRONT + LEFT VIEW	9
TRUE LENGTHS	8
DEVELOPMENT	17
<b>TOTAL</b>	<b>34</b>

PAPER 1 QUESTION 2  
GRADE 12  
FEBRUARY/MARCH 2010  
MEMORANDUM



+  
SP



**ASSESSMENT CRITERIA**

CONSTRUCTION + VPs

PART (A)

PART (B)

ROOF + CHIMNEY

**TOTAL**

5

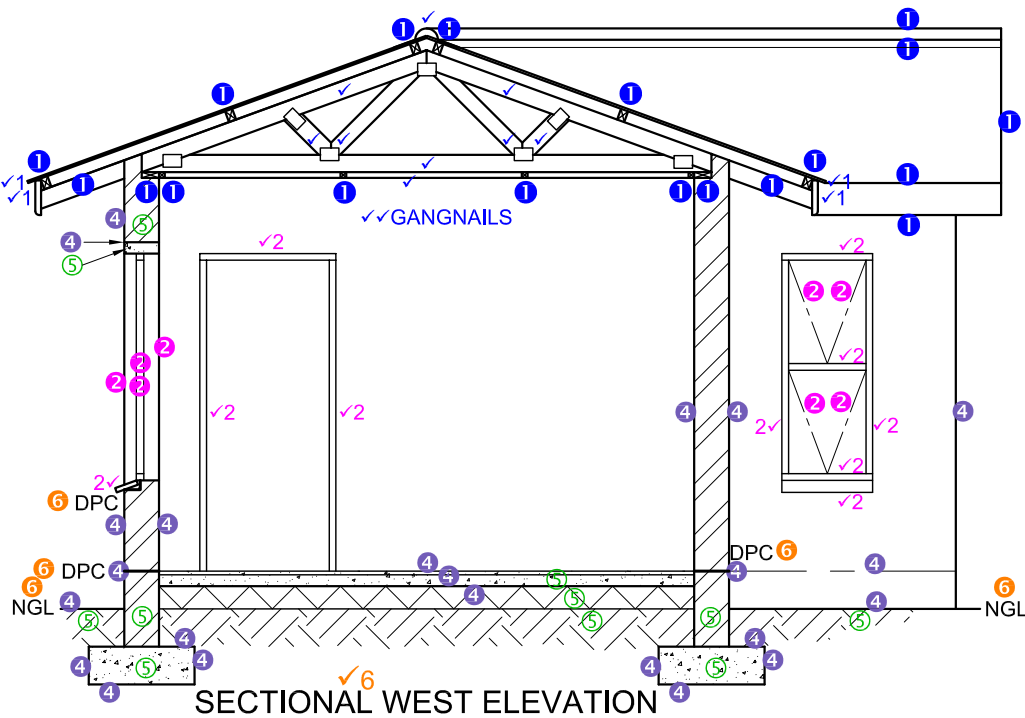
16 $\frac{1}{2}$

6 $\frac{1}{2}$

11

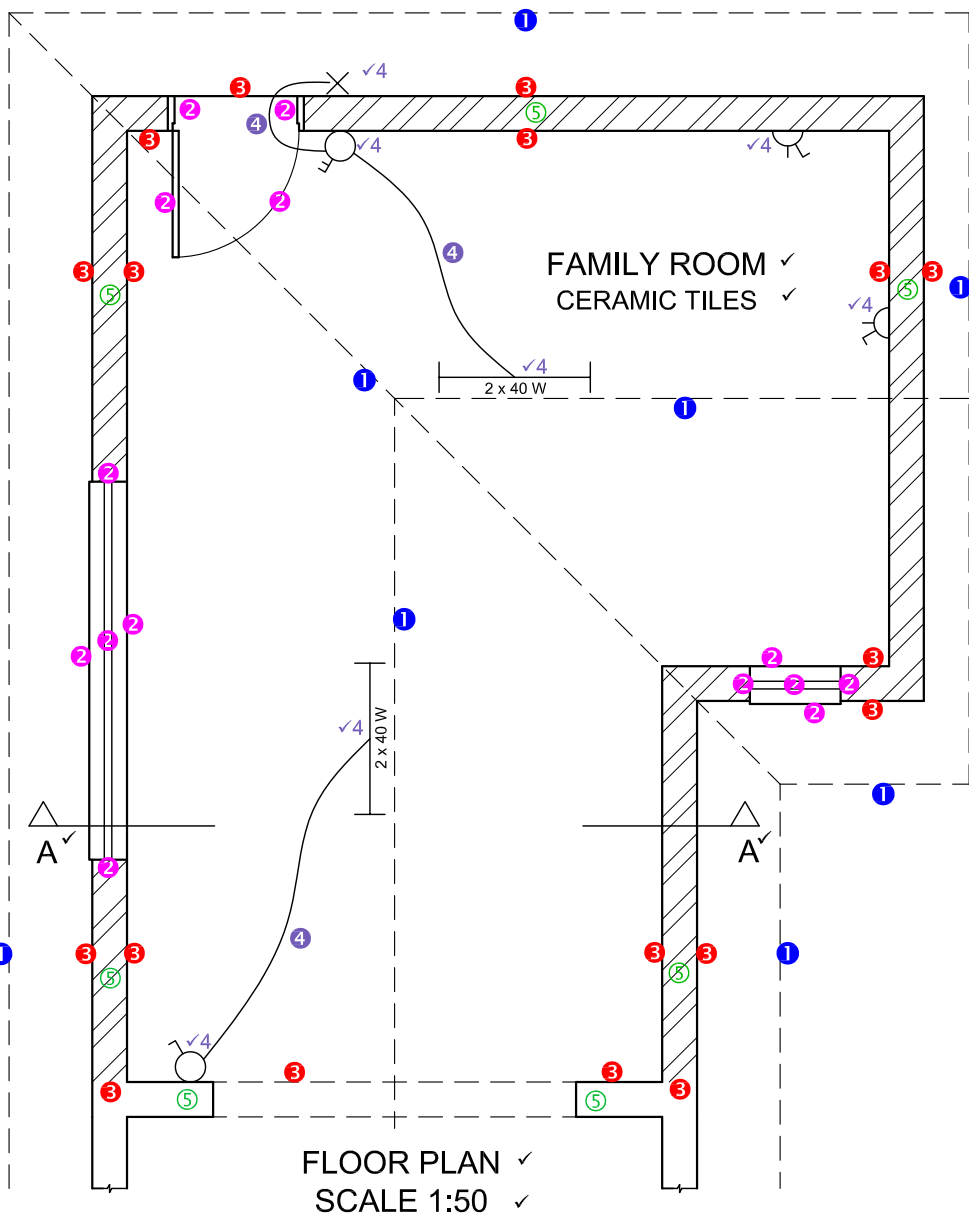
**39**

PAPER 1 QUESTION 3  
GRADE 12  
FEBRUARY/MARCH 2010  
MEMORANDUM



- ① 19 = 9½
- ✓ = 15
- ② 8 = 4
- ✓ = 10

SECTIONAL WEST ELEVATION		
1	ROOF + CEILING	24½
2	WINDOW + DOOR	14
4	WALLS + FLOOR + FOUNDATION	11½
5	HATCHING	5½
6	LABELS	3½
SUBTOTAL		59



FLOOR PLAN		
1	ROOF	4
2	WINDOWS + DOOR	7
3	WALLS	9
4	ELECTRICAL	8½
5	HATCHING	3½
6	LABELS + A-A	6
SUBTOTAL		38
TOTAL		97

PAPER 1 QUESTION 4  
 GRADE 12  
 FEBRUARY/MARCH 2010  
 MEMORANDUM