



## education

Department:  
Education  
Kwazulu - Natal

GRADE 10

ENGINEERING GRAPHICS AND DESIGN

PAPER 2

MARKING  
MEMORANDA

MARKS : 90

TIME : 1.5 HOURS

THIS PAPER CONSISTS OF 3 PAGES.

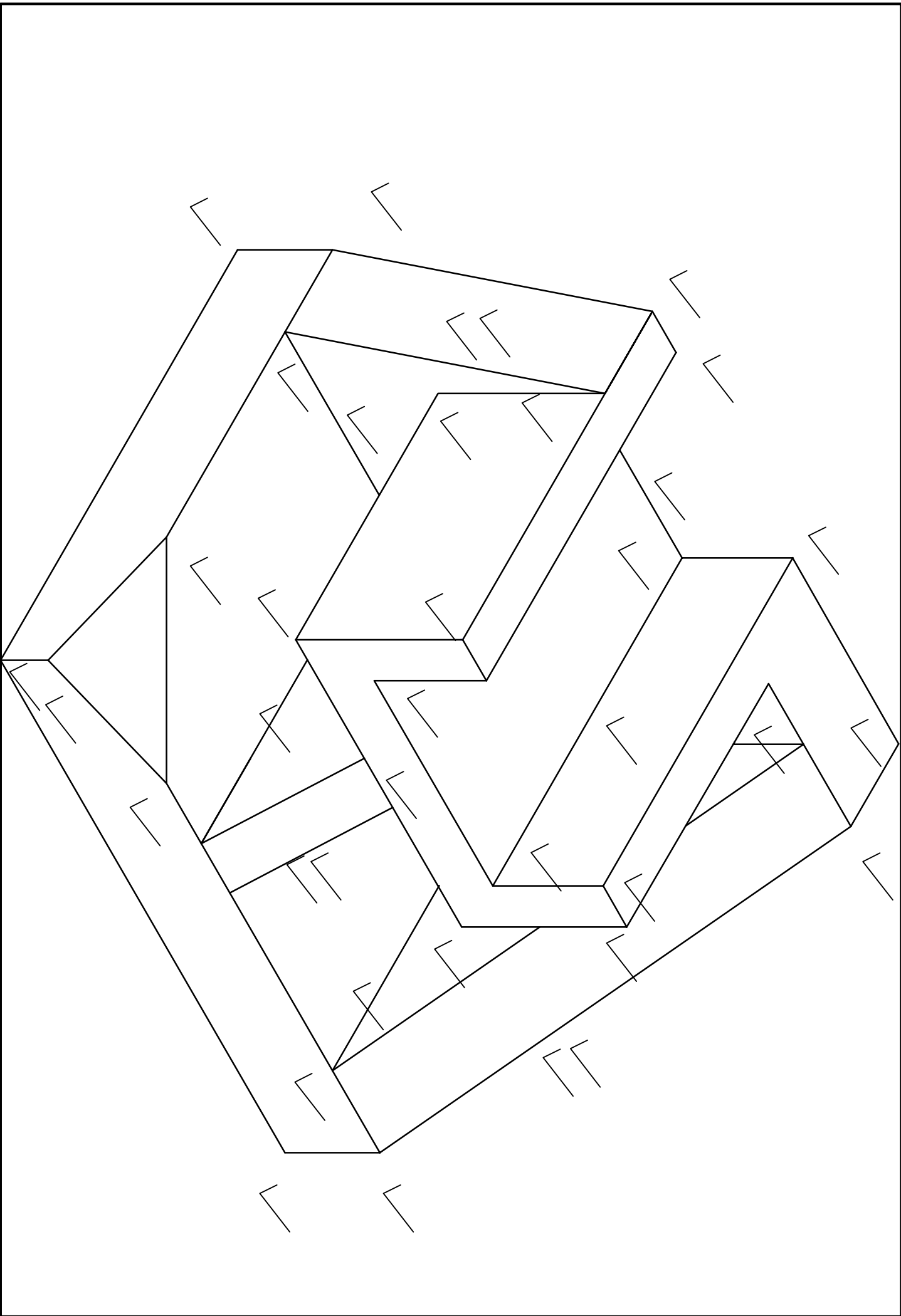
## INSTRUCTIONS

1. The paper consists of **TWO** questions.
2. Answer ALL the questions.
3. All drawings must be drawn to scale 1:1, unless otherwise stated.
4. The questions must be answered on the answer sheets provided.
5. All the answer sheets must be re-stapled in numerical sequence and handed in, irrespective of whether the question was attempted or not.
6. Careful time management is essential in order to complete all questions.
7. Print your name in the block provided on every answer sheet.
8. All answers must be drawn accurately and neatly.
9. Any details or dimensions not given must be assumed in good proportion.

### FOR OFFICIAL USE ONLY

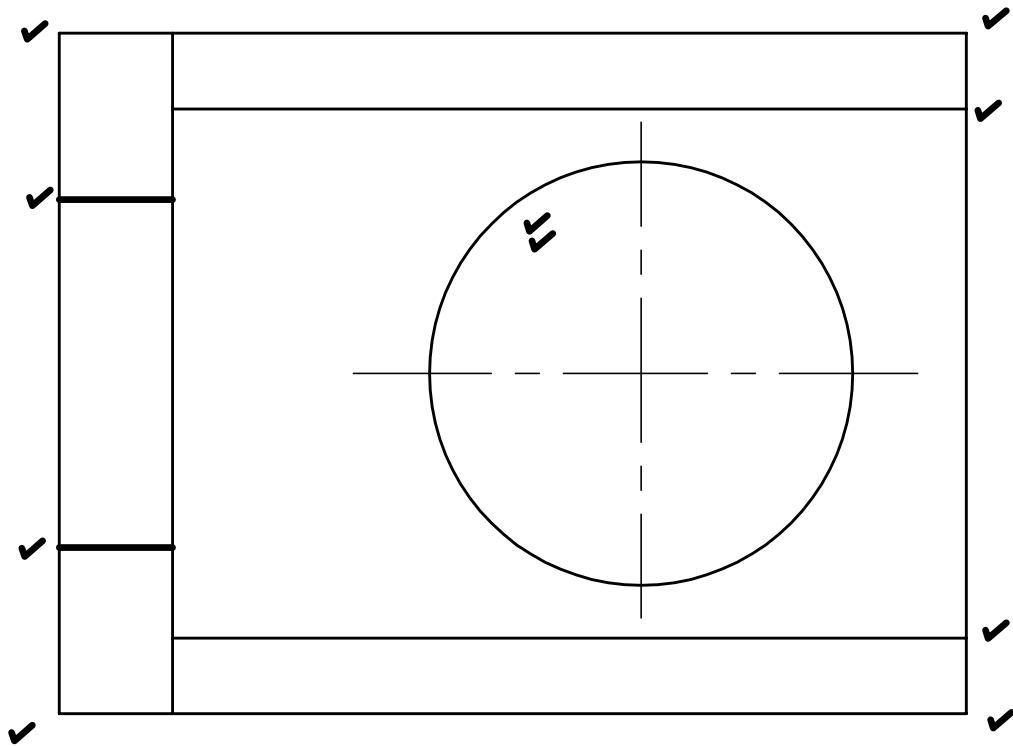
		MODERATED MARK	
1	40		
2	50		
TOTAL	90		

LEVEL	CHECKED BY



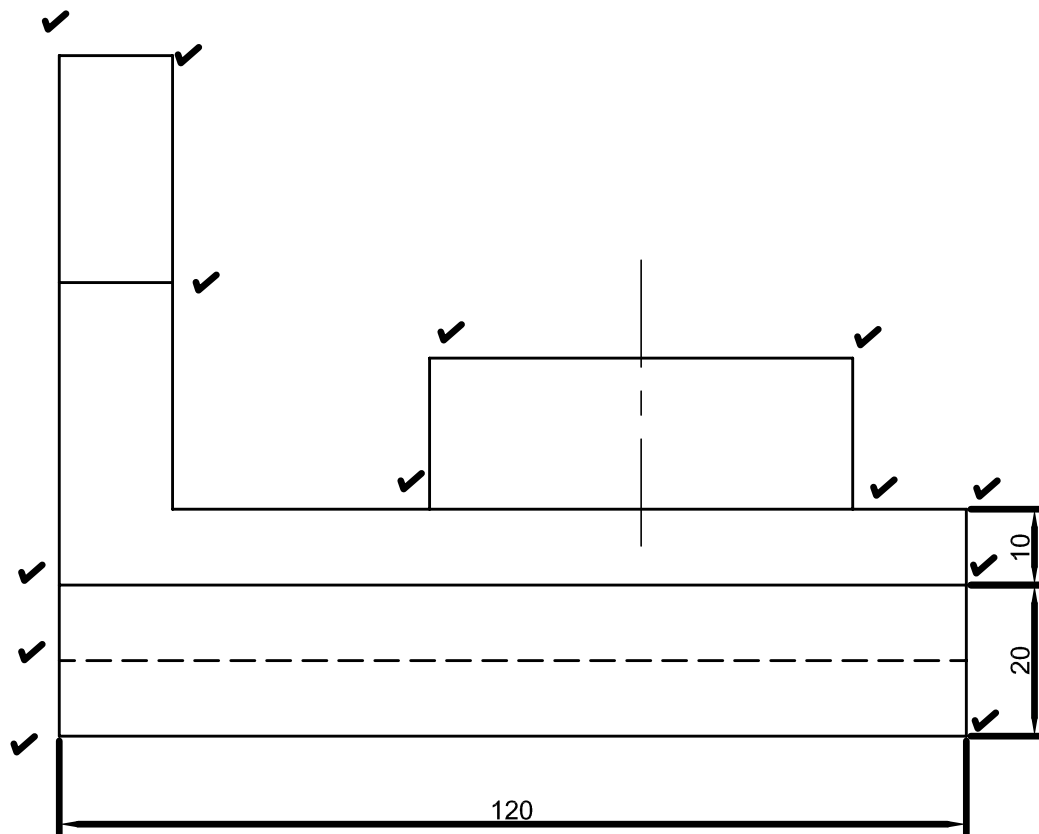
QUESTION **2** 50 MARKS

X<sub>1</sub>



X

Y



Y<sub>1</sub>

GUIDE BRACKET

X<sub>1</sub>**QUESTION TWO**

The figure above is a pictorial drawing of a GUIDE BRACKET. Do not copy this drawing. Study the drawing carefully and then complete the following in THIRD ANGLE PROJECTION :-

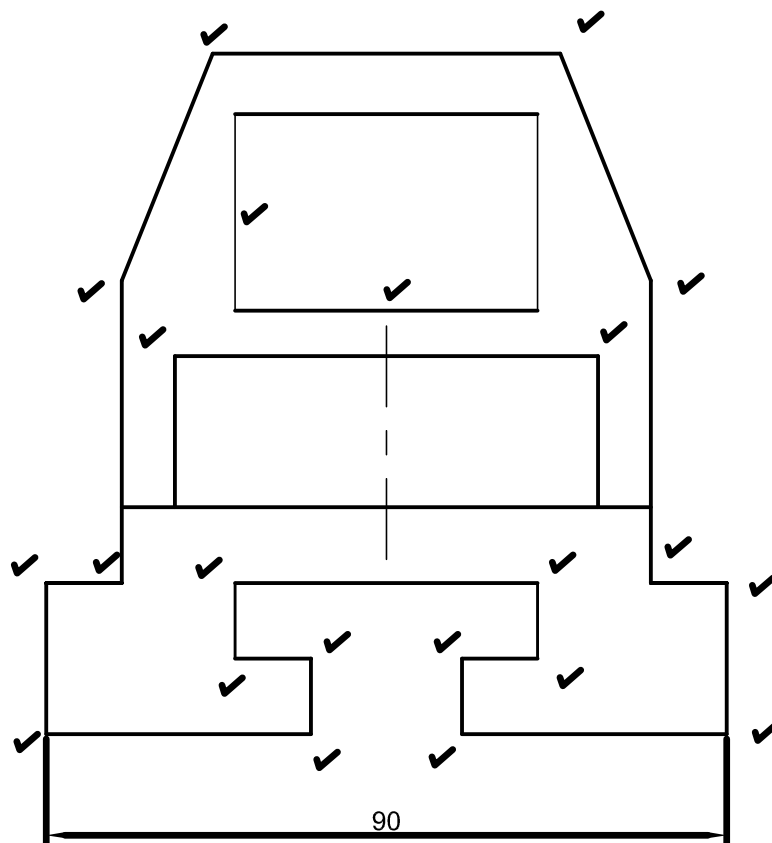
- 2.1. A Front in the direction of arrow A
- 2.2. A Top View (no hidden detail required)
- 2.3. A Right Side View
- 2.4. Print a suitable title
- 2.5. Insert 4 dimensions.

**ASSESSMENT CRITERIA**

FRONT VIEW	13
TOP VIEW	10
RIGHT VIEW	22
CENTRE LINES	2
PRINTING AND DIMENSIONING	3

Y

X

Y<sub>1</sub>