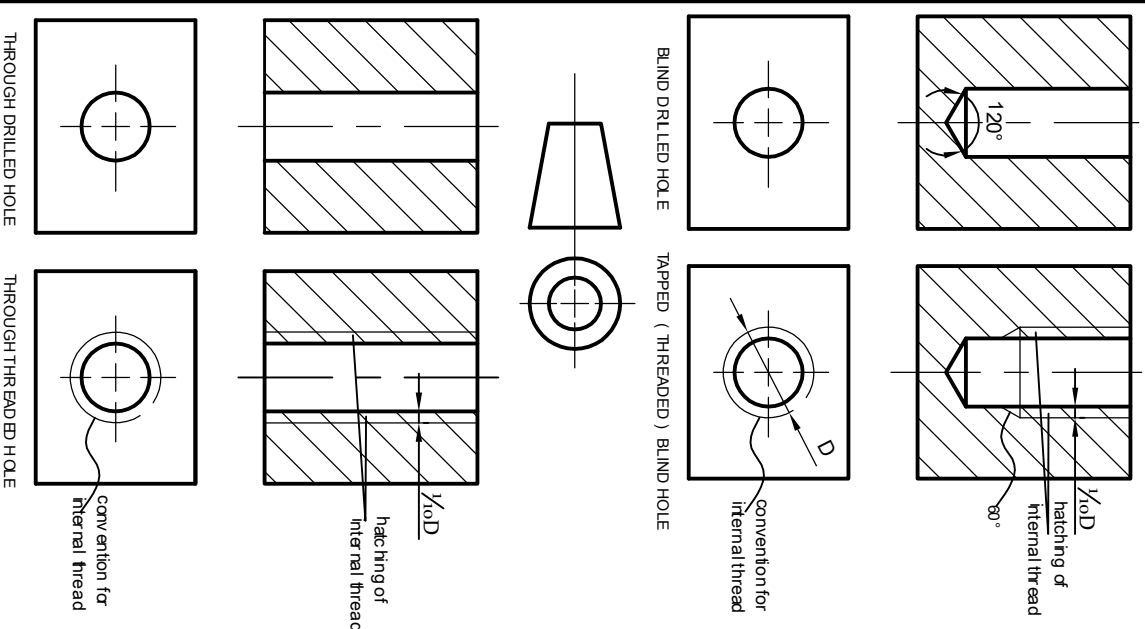
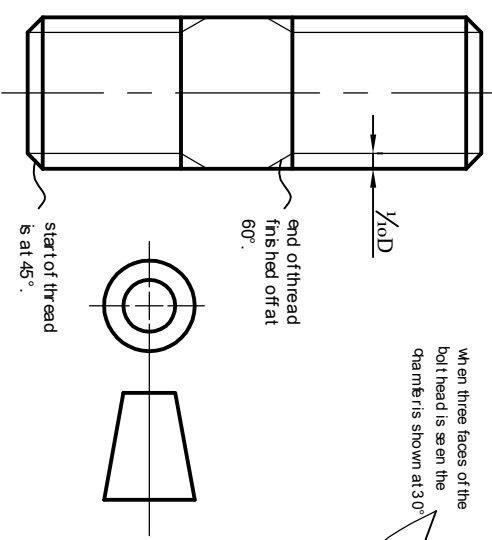
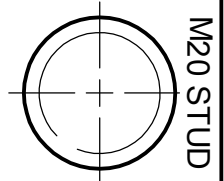


SECTIONING OF HOLES, TAPPED HOLES, BOLTS AND NUTS, WASHERS

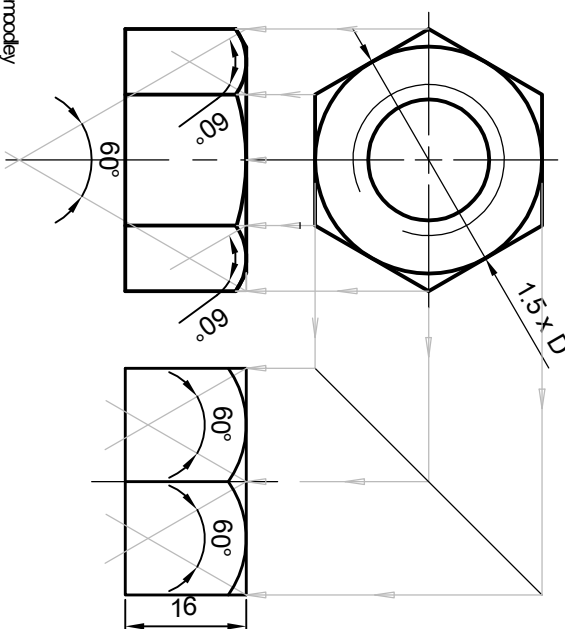


THROUGH DRILLED HOLE
THROUGH TAPPED HOLE
convention for internal thread
hatching of internal thread
1/10 D

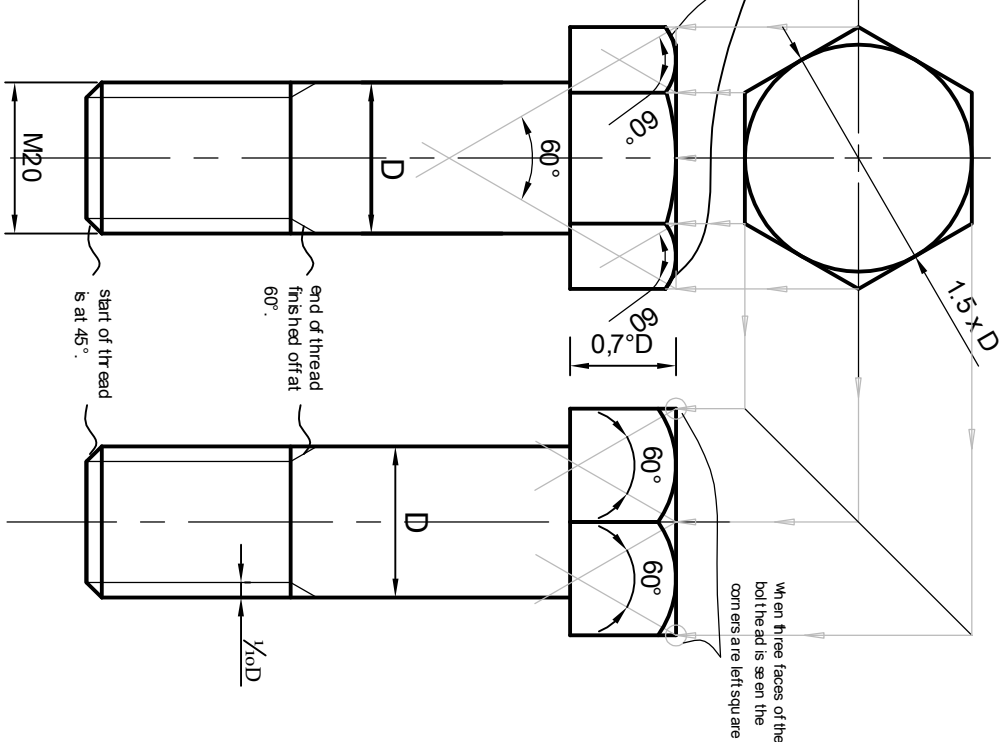


When three faces of the bolt head is seen the chamfer is shown at 30°

M20 HEXAGONAL NUT



M20 HEXAGONAL BOLT



When three faces of the bolt head is seen the chamfer is left square

EXAMPLE:
This is a M20 hexagonal bolt and nut.
The A/F is $1.5 \times D$ (20) = 30
The height of the bolt head is $0.7 \times D$ (20) = 14
The thread depth $0.10 \times D$ (20) = 2